

# SUPERFAST®

2022



**Greece.**

All you want from a destination.

**Superfast Ferries.**

All you want from a trip.

**DISCOVER  
OUR SUPER  
OFFERS**

**EARLY  
BOOKING  
DISCOUNT**

● ANCONA ► CORFU ► IGOUMENITSA ► PATRAS  
● BARI ► CORFU ► IGOUMENITSA ► PATRAS  
● VENICE ► CORFU ► IGOUMENITSA ► PATRAS



# All we are, for 25 years now

Attica Group is engaged in passenger shipping through **Superfast Ferries**, **Blue Star Ferries**, **Hellenic Seaways** and **Africa Morocco Link**, with a total of 32 vessels that provide modern, high-quality transportation services in Greece and abroad.

Attica's vessels operate in 4 countries, servicing 60 unique destinations, connecting 71 ports, and carrying over 7 million passengers, 1 million passenger vehicles and 400,000 trucks every year. The Group operates in the Greek seas (Cyclades, Dodecanese, Northern Aegean islands, Saronic Gulf islands, Sporades and Crete) through the companies **Blue Star Ferries** and **Hellenic Seaways**, and abroad (Greece-Italy) through **Superfast Ferries**.

It also holds a 49% stake in **Africa Morocco Links** on the Morocco-Spain route.



## Responsible operation

Attica Group is the **first** shipping Group in **Greece**, the **third in the Mediterranean** and among the **top 10 in Europe**, setting the pace in passenger shipping. With operations geared towards benefiting our partners and local communities, we limit our environmental footprint and create added value for our shareholders and employees.

Through the years, our strategy and one of our Group's corporate values has steadily been to maintain practices that promote Fair Entrepreneurship. In doing so, we have responded decisively, adopting a long-term perspective in terms of our customers' needs, our multifaceted contribution to society and the protection of the environment. This is clearly demonstrated by the fact that we were the first company in the passenger shipping industry globally to issue a Responsibility Report based on the Global Reporting Initiative (GRI) standards, and continue to do so.

Our Responsibility Reports are available at [www.attica-group.com](http://www.attica-group.com)

## Travelling Responsibly

The Attica Group vessels have been certified by Bureau Veritas with the Safeguard label, for adopting special and effective measures to prevent infections and address the biological hazards caused by COVID-19, aiming to protect human lives.





FRANCE

ITALY

VENICE

ANCONA

ROME

BARI

GREECE

KAVALA

THESSALONIKI

NORTH  
AEGEAN  
ISLANDS

VOLOS

SPORADES

ATHENS

RAFINA

LAVRIO

SARONIC  
ISLANDS

CYCLADES

DODECANESE

HERAKLION

CHANIA

CRETE

CORFU  
IGOUMENITSA

PATRAS

PIRAEUS

The Italy-Greece and Crete routes are jointly operated with ANEK LINES.







## EVERYTHING TO ENSURE YOUR COMFORT

Natural beauty, long history, people, culture, flavours and experiences are some of the countless features that make Greece a unique destination. Your journey towards exploring can be just as unique.

Welcome aboard! Enjoy your journey in comfort and luxury with the type of seat or accommodation that suits you best.

With Superfast Ferries you can choose aircraft-type seats, deck seats, dormitories\*, inside & outside cabins, special cabins where you can travel with your pet, cabins for physically-challenged passengers, Lux\* cabins, and also PURE\* cabins.

You couldn't feel more at home in our cabins! They are fitted with thermostats for you to set the temperature, as well as with shower and WC.

\* Not available on all vessels.





## ...AND YOUR PET'S COMFORT

Your pet is important to us! That's why we have special cabins so you can travel together, or alternatively, special kennels and hygiene areas are available for your pet.



## EVERYTHING TO ENSURE YOUR WELLNESS

Breathe easier  
and wake up  
more  
refreshed!

**PURE**

PURE cabins have a state-of-the-art special air and surface purification system so you breathe better, especially if you are highly sensitive to airborne particles.





## ALL THE OPTIONS OPEN TO YOU

### Camping on board\*

Travel by sea with your camper, making use of our on-board facilities including shower, WC and 220-volt electricity supply, all for the price of a deck and vehicle fare.

Not available on routes between Italy-Corfu and v.v. Valid from 1 April to 31 October 2022.

\*Not available on all vessels.



## EVERYTHING TO KEEP OUR YOUNGEST PASSENGERS ENTERTAINED

Set out on a great adventure with Fasteritos! Explore the vessel and discover where they're hidden. Just for our younger passengers, Fasteritos are specially trained to help the vessel's crew and are ready to teach children the various secrets of life at sea. And they never take things too seriously - unless the captain's around!!! If you're a family with young children travelling in a 3 or 4 bed outside cabin, for your next trip ask for a special family cabin with Fasteritos! Once you have boarded the vessel, ask the reception about availability and don't forget to pick up the great Fasteritos colouring book and pencils!



**fasteritos**





## ALL THE REWARDS

The Seasmiles programme is especially designed to offer you exclusive privileges, unique gifts, special offers, promotions and high quality services, which will make every trip with us a truly unforgettable experience! Present your card to get a 10% discount on selected items in on-board shops or enjoy fine dining in the À la Carte restaurant with a 15% discount. Gold and Silver members enjoy a 20% discount on their tickets between Italy and Greece. Unique benefits and privileges await you from a constantly expanding network of selected partners in various categories such as accommodation, shopping, food and drink, entertainment, technology, health and beauty.

**seasmiles**  
LOYALTY SCHEME



Find out more at  
[www.seasmiles.com](http://www.seasmiles.com)



Visit on board the Seasmiles Kiosk where you may sign up for the Seasmiles programme, check your points balance and issue or switch your Blue & Silver plastic card with the brand new Biocard.



# ALL THE PERKS OF COMBINING SAIL AND RAIL TRAVEL...



If you are a holder of a railway pass, you can continue your journey by sea, at reduced prices or/and free of charge. Find out more on the below chart, according to your railway pass:

## EURAIL / INTERRAIL GREEK ISLANDS PASS 6 DAYS

### Adriatic Sea Routes

- 1 round trip between Italy and Greece within a 1-month period
- 1<sup>st</sup> class customers are entitled to a bed in a shared 4-bed cabin with WC & shower
- 2<sup>nd</sup> class customers are entitled to aircraft-type seats.
- Special fares apply for possible on board upgrades (not valid for LUX cabins)
- Free TRAINOSE rail/bus transfer from the international port of Patras to the domestic port of Piraeus (and vice versa)

### Domestic Routes

- Unlimited ferry trips on the Greek islands within a 1-month period
- 1<sup>st</sup> and 2<sup>nd</sup> class railway customers are entitled to Economy class
- 30% discount on all additional trips (beyond the 6 days) within a 1-month period
- 30% discount on possible on board upgrades (not valid for LUX cabins)
- Free TRAINOSE rail/bus transfer from the international port of Patras to the domestic port of Piraeus (and vice versa)

## EURAIL / INTERRAIL GREEK ISLANDS PASS 4 DAYS

### Adriatic Sea Routes

Not valid for travel in the Adriatic Sea routes

### Domestic Routes

- Unlimited ferry trips on the Greek islands within a 1-month period
- 1<sup>st</sup> and 2<sup>nd</sup> class railway customers are entitled to Economy class
- 30% discount on all additional trips (beyond the 4 days) within a 1-month period
- 30% discount on possible on board upgrades (not valid for LUX cabins)

## EURAIL GLOBAL PASS / INTERRAIL GLOBAL PASS/ BALKAN FEXIPASS

### Adriatic Sea Routes

- Free sea-crossings between Italy and Greece
- 1<sup>st</sup> class pass holders travel free of charge in dormitories (where available) and/or aircraft type seats
- 2<sup>nd</sup> class pass holders travel free of charge in deck seating
- Special fares apply for possible on board upgrades (not valid for LUX cabins)
- Fuel surcharge, high or shoulder season surcharge and port charges are applicable, per passenger, per way

### Domestic Routes

- 30% discount on Economy class
- Eurail Global Pass and Interrail Global Pass holders enjoy a 30% discount on Economy class, provided that they have already realized a crossing in the Adriatic Sea routes with SUPERFAST FERRIES or ANEK Lines







### RIT, RAIL PLUS, FIP, DB AUTOZUG, NRT, GREEK PASSES (GREEK FLEXIPASS, GREEK FLEXIPLASS RAIL N' FLY, VERGINA FLEXIPASS)

#### Adriatic Sea Routes

- Sea-crossings at reduced rates:
- RIT & GREEK PASSES 30% discount
- RAIL PLUS 15% discount
- DB AUTOZUG 10% discount (valid for passengers and vehicles)
- ▶ FIP INTERNATIONAL REDUCED RATE CARD 50% discount
- ▶ FIP INTERNATIONAL FREE PASS 100% discount  
A FIP Reservation Request Form is required

*The above discounts apply to any accommodation (except LUX cabins). Fuel surcharge and port taxes are applicable per passenger, per trip*

#### Domestic Routes

- RIT, RAIL PLUS, NRT & DB AUTOZUG not valid on domestic routes
- GREEK PASSES (Greek Flexipass, Greek Flexipass Rail N' Fly, Vergina Flexipass) 30% discount on Economy class
- FIP INTERNATIONAL REDUCED RATE CARD 50% discount
- 1<sup>st</sup> class railway customers travel in 1<sup>st</sup> class and 2<sup>nd</sup> class railway customers travel in Economy class
- 25% discount available for possible on board upgrades (not valid for LUX cabins)
- ▶ The FIP discount is not valid for pensioners and their family members throughout the year
- ▶ The FIP discount is not applicable during the months of July & August
- ▶ FIP INTERNATIONAL FREE PASS 100% discount. A discount Form is required

### DESTINATIONS

#### Adriatic Sea Routes

SUPERFAST FERRIES operates in the following routes (in cooperation with ANEK LINES)

- PATRAS - ANCONA/BARI/VENICE
- IGOUMENITSA - ANCONA/BARI/VENICE
- CORFU - ANCONA/BARI/VENICE only during the summer period
- VENICE - PATRAS/IGOUMENITSA/CORFU - VENICE - CORFU only during the summer period
- ANCONA - PATRAS/IGOUMENITSA/CORFU - ANCONA - CORFU only during the summer period
- BARI - PATRAS/IGOUMENITSA/CORFU - BARI - CORFU only during the summer period

#### Domestic Routes

You can travel to the following island destinations with Blue Star Ferries and Hellenic Seaways:

- CYCLADES
- DODECANESE
- SPORADES
- SARONIC ISLANDS
- NORTH AEGEAN ISLANDS
- CRETE

The Crete routes are jointly operated with ANEK Lines

Please note that not all ferry routes are served daily

### HOW TO MAKE A RESERVATION

#### Adriatic Sea Routes

- Online, through [www.superfast.com](http://www.superfast.com)  
Not valid for all railway pass types
- Through the Athens Call Center, at +30 210 8919700 or +30 210 8919800
- By email to [helpdesk@attica-group.com](mailto:helpdesk@attica-group.com), or to [helpdesk@anek-superfast.com](mailto:helpdesk@anek-superfast.com)

#### Domestic Routes

- Through the Athens Call Center, at +30 210 8919700 or +30 210 8919800
- By email to [helpdesk@attica-group.com](mailto:helpdesk@attica-group.com), or to [helpdesk@anek-superfast.com](mailto:helpdesk@anek-superfast.com)

For more information, please visit <https://www.superfast.com/en-gb/special-offers/sail-rail>

You may purchase one of the above railway passes online, at [www.interrail.eu/en/interrail-passes](http://www.interrail.eu/en/interrail-passes) & [www.eurail.com/en/eurail-passes](http://www.eurail.com/en/eurail-passes) or at any licensed agency in Greece and Europe.

If you are in Greece, you may contact directly any TRAINOSE train station or visit [www.trainose.gr](http://www.trainose.gr)

Enjoy your trip!



## EVERYTHING IN THE WAY OF LUXURY

Take a dip in the swimming pool\* when you're out at sea, sunbathe on the deck and enjoy a refreshing cocktail, soft drink or coffee at the bar that's open round the clock.

Try your luck in the casinos available on all our vessels or dance the night away at the dancing club.\*

Our young friends can enjoy themselves at the specially created television area, watching children's movies.

\*Not available on all vessels.



Open-deck bars operate weather permitting.  
The pool\* closes at sunset.





## ...AND PLEASURE

The sea air is certain to give you an appetite! So why not enjoy the inspired culinary creations of our top chefs - and fabulous views of the sea - in the refined atmosphere of our À la Carte restaurant\*. Treat yourself to dishes made with Greek ingredients and inspired by the cuisine of the Greek islands, accompanied by the perfect wine from our cellar.

Alternatively if you prefer a wider selection, try our self-service restaurant for the perfect casual meal.

\*Available on SUPERFAST XI.



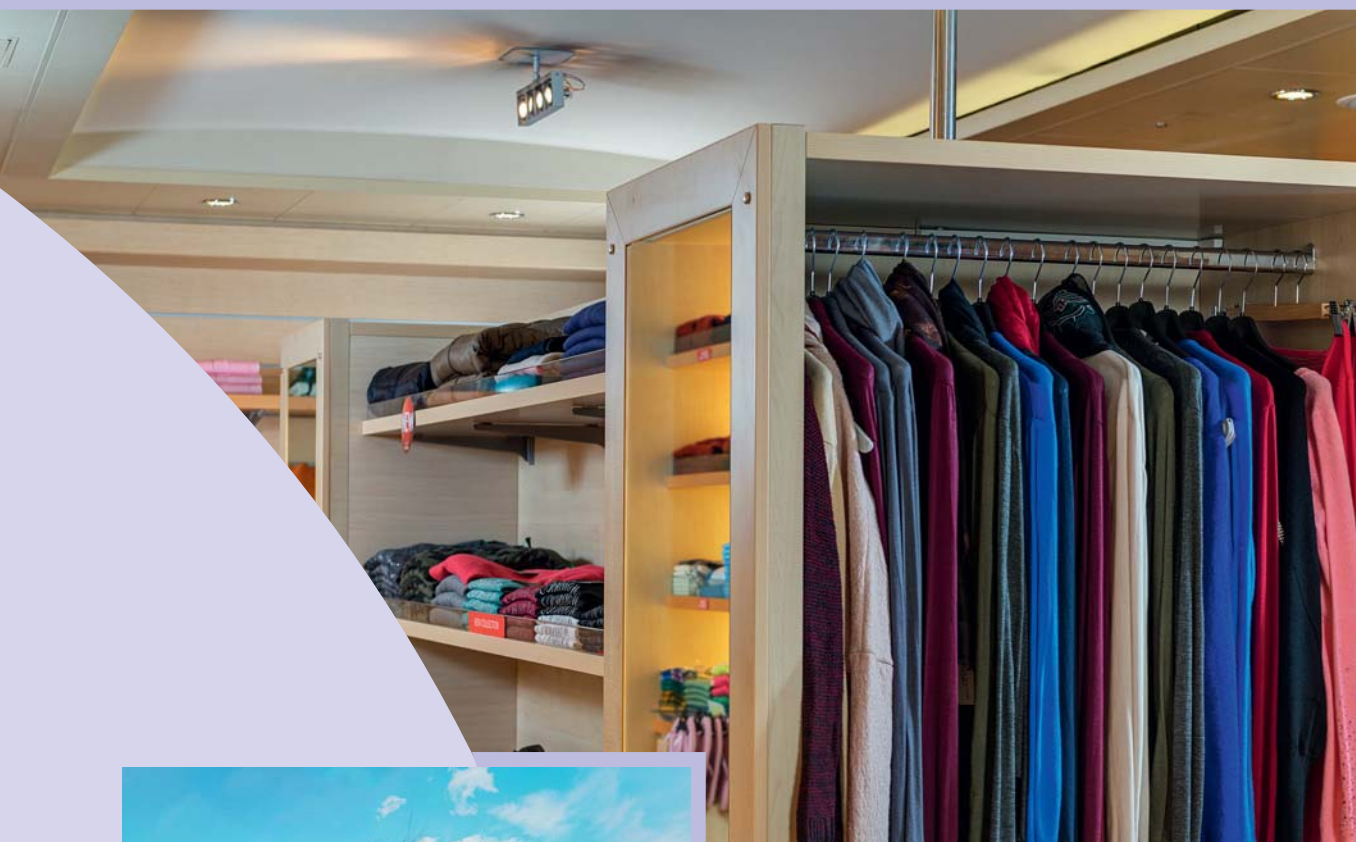




## ***SERVING ALL YOUR NEEDS***

### **Shopping included!**

Your travel experience would not be complete without the chance to go shopping. Our shop has a wide range of perfumes, cosmetics, jewellery, accessories and gifts, as well as selections of clothes, travel goods, spirits, Greek delicatessen products, Swiss chocolates and selected Superfast souvenirs.





## STAY CONNECTED

Your trip on Superfast Ferries can be even more engaging!

Visit our updated interactive and versatile **@sea portal** and discover a new online world!

Connect to the ship's WiFi network and gain free access to the options open to you via your mobile phone or tablet, listening to music and even getting updates on the weather and the ship's real-time location. Also available via **@sea** is useful information about the vessel, ports, destinations and much more.

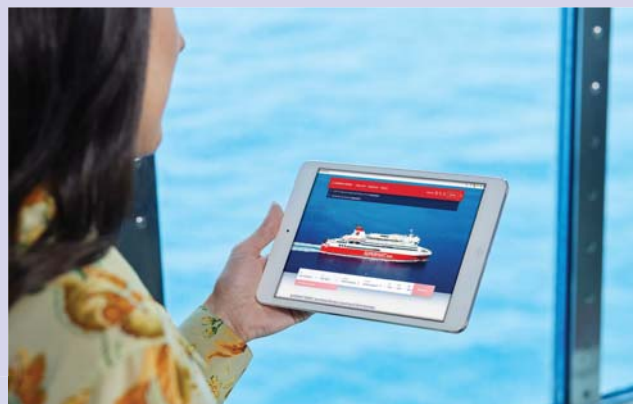
Don't forget to visit **www.seasmiles.com** and find out about our loyalty programme.

We'll be expecting you!



## INTERNET AT SEA

At the reception desk, get your access card so you can surf the web and keep in touch with everyone on Social Media.



**superfast.com**

**ANCONA ▶ IGOUMENITSA ▶ PATRAS**

01.01.22 - 30.06.22 & 12.09.22 - 31.12.22	Ancona Departure	Igoumenitsa Arrival*	Patras Arrival*
Monday			
Tue., Wed., Thu., Fri.	13:30	08:00	14:30
Saturday & Sunday	16:30	09:30	15:00

\* No sailings on: 01.01 & 25.12

**PATRAS ▶ IGOUMENITSA ▶ ANCONA**

01.01.22 - 30.06.22 & 12.09.22 - 31.12.22	Patras Departure	Igoumenitsa Departure	Ancona Arrival*
Mon., Tue., Wed., Sun.	17:30	23:59	16:30
Thursday			
Friday & Saturday	17:30	23:15	14:00

\* No sailings on: 01.01 & 25.12

**ANCONA ▶ CORFU ▶ IGOUMENITSA ▶ PATRAS**

01.07.22 - 11.08.22	Ancona Departure	Corfu Arrival*	Igoumenitsa Arrival*	Patras Arrival*
Mon., Wed., Fri., Sun.	13:30		06:30	12:00
Tuesday	13:30 16:30	05:30	06:45 09:30	15:00
Thursday	15:00 16:30	07:00	08:15 09:30	15:00
Saturday	13:30 16:30		06:30 09:30	12:00 15:00

**PATRAS ▶ IGOUMENITSA ▶ CORFU ▶ ANCONA**

01.07.22 - 11.08.22	Patras Departure	Igoumenitsa Departure	Corfu Departure	Ancona Arrival*
Monday	14:30 17:30	20:15		11:00 12:00
Tue., Thu., Sat., Sun.	14:30	20:15		11:00
Wed., Fri. <sup>(1)</sup>	17:30	19:30	20:45	12:00 10:45

[1] On Friday 01.07 the itinerary Igoumenitsa - Corfu - Ancona will operate as follows: Patras (Dep. 14:30) - Igoumenitsa (Dep. 20:15) - Ancona (Arrival 11:00, 02.07)

**ANCONA ▶ CORFU ▶ IGOUMENITSA ▶ PATRAS**

12.08.22 - 11.09.22	Ancona Departure	Corfu Arrival*	Igoumenitsa Arrival*	Patras Arrival*
Mon., Wed., Fri., Sun.	13:30		06:30	12:00
Tuesday	13:30 16:30	05:30	06:45	12:00
Thursday	15:00 16:30	07:00	08:15	12:00
Saturday 13.08 & 10.09	13:30 16:30		06:30 09:30	12:00 15:00
Saturday 20.08, 27.08 & 03.09	13:30 16:30		06:30 10:30	12:00

**PATRAS ▶ IGOUMENITSA ▶ CORFU ▶ ANCONA**

12.08.22 - 11.09.22	Patras Departure	Igoumenitsa Departure	Corfu Departure	Ancona Arrival*
Monday 15.08	14:30 17:30	20:15		11:00 12:00
Monday 22.08, 29.08 & 05.09	17:30	23:15 19:30	20:45	14:00 10:45
Tue., Thu., Sat., Sun.	14:30	20:15		11:00
Wednesday 17.08, 24.08 & 07.09	17:30	19:30	20:45	12:00 10:45
Wednesday 31.08	17:30	23:15 19:30	20:45	14:00 10:45
Friday	17:30	23:15 19:30	20:45	14:00 10:45

\* The following day.

• Departures and arrivals are indicated in local times.

• Arrival times quoted, indicate the time the vessel arrives at the entrance of the port.

• The above itineraries may be modified due to ship maintenance.

**SEASONS**
**ANCONA → GREECE**

ANCONA → GREECE											Low season					Shoulder season					High season					No sailing					
JULY	Fr	Sa	Su	Mo	Tu	We	Th	Fr	Sa	Su	Mo	Tu	We	Th	Fr	Sa	Su	Mo	Tu	We	Th	Fr	Sa	Su	Mo	Tu	We	Th	Fr	Sa	Su
Departure 13:30 / 15:00	1	2	3	4	5	6	7	8	9	10	11	12	13	14	15	16	17	18	19	20	21	22	23	24	25	26	27	28	29	30	31
Departure 16:30	1	2	3	4	5	6	7	8	9	10	11	12	13	14	15	16	17	18	19	20	21	22	23	24	25	26	27	28	29	30	31
AUGUST	Mo	Tu	We	Th	Fr	Sa	Su	Mo	Tu	We	Th	Fr	Sa	Su	Mo	Tu	We	Th	Fr	Sa	Su	Mo	Tu	We	Th	Fr	Sa	Su	Mo	Tu	We
Departure 13:30 / 15:00	1	2	3	4	5	6	7	8	9	10	11	12	13	14	15	16	17	18	19	20	21	22	23	24	25	26	27	28	29	30	31
Departure 16:30	1	2	3	4	5	6	7	8	9	10	11	12	13	14	15	16	17	18	19	20	21	22	23	24	25	26	27	28	29	30	31

**GREECE → ANCONA**

GREECE → ANCONA												Low season					Shoulder season					High season					No sailing				
AUGUST	Mo	Tu	We	Th	Fr	Sa	Su	Mo	Tu	We	Th	Fr	Sa	Su	Mo	Tu	We	Th	Fr	Sa	Su	Mo	Tu	We	Th	Fr	Sa	Su	Mo	Tu	We
Departure 14:30*	1	2	3	4	5	6	7	8	9	10	11	12	13	14	15	16	17	18	19	20	21	22	23	24	25	26	27	28	29	30	31
Departure 17:30	1	2	3	4	5	6	7	8	9	10	11	12	13	14	15	16	17	18	19	20	21	22	23	24	25	26	27	28	29	30	31
SEPTEMBER	Th	Fr	Sa	Su	Mo	Tu	We	Th	Fr	Sa	Su	Mo	Tu	We	Th	Fr	Sa	Su	Mo	Tu	We	Th	Fr	Sa	Su	Mo	Tu	We	Th	Fr	
Departure 14:30*	1	2	3	4	5	6	7	8	9	10	11	12	13	14	15	16	17	18	19	20	21	22	23	24	25	26	27	28	29	30	
Departure 17:30	1	2	3	4	5	6	7	8	9	10	11	12	13	14	15	16	17	18	19	20	21	22	23	24	25	26	27	28	29	30	

\* All other dates NOT mentioned in the above tables are low season dates.

\* Same seasonality applies for the 19:30 departure from Igoumenitsa and the 20:45 departure from Corfu every Monday, Wednesday & Friday.

Jointly operated with ANEK LINES



## FARES

Check out our offers on pages 20-23

Fares in Euro (€) 10.01.2022 - 08.01.2023

CABIN / VEHICLE CATEGORY		LOW SEASON		SHOULDER SEASON		HIGH SEASON	
PASSENGERS (fares per person)		ONE WAY	RETURN	ONE WAY	RETURN	ONE WAY	RETURN
DECK	Deck	63	44	75	53	85	60
ATS	Aircraft-type seats	75	53	88	62	97	68
AB4	4-bed inside cabin	124	87	147	103	178	125
A4	4-bed outside cabin	137	96	168	118	196	137
AB3	3-bed inside cabin	146	102	178	125	218	153
AA3	3-bed outside cabin	164	115	202	141	239	167
AB2	2-bed inside cabin	166	116	206	144	257	180
A2	2-bed outside cabin	187	131	227	159	282	197
AA2	2-bed outside cabin	198	139	244	171	289	202
LUX	2-bed outside cabin <sup>[1]</sup>	273	191	331	232	385	270
VEHICLES (fares per vehicle)							
1.	Vehicles or trailers up to 6m long & 2m high	81	57	105	74	139	97
2.	Cars with roof box over 2m high	118	83	151	106	195	137
3.	Vehicles or trailers up to 6m long & over 2m high	147	103	227	159	293	205
4.	Vehicles or trailers 6.01m to 8m long	250	175	356	249	438	307
5.	Vehicles or trailers over 8.01m long	358	251	491	344	588	412
6.	Trailers up to 2.50m long & 2m high <sup>[2]</sup>	64	45	87	61	106	74
7.	Campers / Caravans / Trailers OPEN DECK up to 6m long	178	125	278	195	359	251
8.	Campers / Caravans / Trailers OPEN DECK 6.01m to 8m long	302	211	440	308	540	378
9.	Campers / Caravans / Trailers OPEN DECK over 8.01m long	433	303	607	425	727	509
10.	Motorcycles <sup>[3]</sup>	33	23	41	29	48	34
11.	Bicycles	Free	Free	Free	Free	Free	Free

[1] Including breakfast. [2] Same fare applies for Open Deck trailers up to 2.50m long. [3] Motorcycles with a side car or a trailer or 4 wheels are charged as vehicles up to 6m long & 2m high.

Certain accommodation types may not be available on vessels operating the route. All cabins are fitted with shower and WC.

### PURE<sup>®</sup> CABIN

(fares in €)

PER  
WAY

Cabin surcharge 50

### PET CARRIAGE

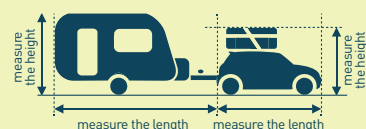
(fares per pet in €)

PER  
WAY

Pet in cabin 50

Pet in kennel 20

### MEASURE YOUR VEHICLE'S DIMENSIONS



### TERMS FOR FARES

- LUX, A2 and AB2 (AB2 not available for single use on SUPERFAST XI): Single occupancy is only available in these cabin categories and has 50% surcharge during low season and 70% surcharge during shoulder & high seasons.
- The round trip fare is calculated by adding the one way and the return fare of the respective season / seasons.
- Occupancy of A4, AB4, A2 and AB2 cabins (only AB2 cabins with 2 lower beds) is available on a per bed basis.
- Pet carriage in cabins:** Pet cabins are 4-bed inside & outside cabins that can be booked as 4-bed, 3-bed, 2-bed or single occupancy cabins. Single occupancy has 50% surcharge during low season and 70% surcharge during shoulder & high seasons on the respective double occupancy fare. Pet cabins are not available on a per bed basis. Maximum 2 pets per cabin allowed.
- PURE cabins:** These are LUX, A4 or AB4 cabins. Single occupancy of an inside or outside PURE cabin (AB4 or A4) has a supplement of 100% on the respective double occupancy fare. Single occupancy of a LUX PURE cabin has 50% surcharge during low season and 70% surcharge during shoulder & high seasons on the respective double occupancy fare. PURE cabins are not available on a per bed basis.
- A fuel surcharge of €32 per way, per passenger (excluding infants in any accommodation category) and €36 per way, per vehicle (excluding motorcycles) applies. The fuel surcharge may be adjusted when appropriate (not included in the above fares).

**BARI ► IGOUMENITSA ► PATRAS**

01.01.22 - 31.05.22 & 01.10.22 - 31.12.22	Bari Departure	Igoumenitsa Arrival	Patras Arrival*
Monday-Saturday	19:30	05:30*	13:00
Sunday	13:30	23:00	07:00

- No sailings on: 01.01, 02.01, & 25.12
- Via Corfu on Thursday 21.04: Bari (Dep. 19:30) - Corfu (Arr. 04:30 on 22.04) - Igoumenitsa (Arr. 06:00 on 22.04) - Patras (Arr. 13:00 on 22.04)

**BARI ► CORFU ► IGOUMENITSA ► PATRAS**

01.06.22 - 30.06.22 & 19.09.22 - 30.09.22	Bari Departure	Corfu Arrival*	Igoumenitsa Arrival	Patras Arrival*
Mon., Tue., Wed., Fri., Sat.	19:30		05:30*	13:00
Thursday	19:30	04:30	06:00*	13:00
Sunday	13:30		23:00	07:00

**BARI ► CORFU ► IGOUMENITSA ► PATRAS**

01.07.22 - 21.07.22	Bari Departure	Corfu Arrival*	Igoumenitsa Arrival	Patras Arrival*
Mon., Tue., Wed.	19:30		05:30*	13:00
Thu., Fri., Sat.	19:30	04:30	06:00*	13:00
Sunday	13:30		23:00	07:00

**BARI ► CORFU ► IGOUMENITSA ► PATRAS**

22.07.22 - 21.08.22	Bari Departure	Corfu Arrival	Igoumenitsa Arrival	Patras Arrival*
Mon., Tue., Wed.	19:30		05:30*	13:00
Thursday	19:30	04:30*	06:00*	13:00
Friday	12:00	21:00	22:30	
Saturday	12:00 19:30	21:00	22:30 05:30*	13:00
Sunday	13:30		23:00	07:00

**BARI ► CORFU ► IGOUMENITSA ► PATRAS**

22.08.22 - 18.09.22	Bari Departure	Corfu Arrival*	Igoumenitsa Arrival	Patras Arrival*
Mon., Tue., Wed., Fri., Sat. <sup>[1]</sup>	19:30		05:30*	13:00
Thursday	19:30	04:30	06:00*	13:00
Sunday	13:30		23:00	07:00

- [1] Via Corfu on Saturday 27.08: Bari (Dep. 19:30) - Corfu (Arr. 04:30 on 28.08) - Igoumenitsa (Arr. 06:00 on 28.08) - Patras (Arr. 13:00 on 28.08)

**BARI → GREECE**

	Fr	Sa	Su	Mo	Tu	We	Th	Fr	Sa	Su	Mo	Tu	We	Th	Fr	Sa	Su	Mo	Tu	We	Th	Fr	Sa	Su	Mo	Tu	We	Th	Fr	Sa	Su
JULY	1	2	3	4	5	6	7	8	9	10	11	12	13	14	15	16	17	18	19	20	21	22	23	24	25	26	27	28	29	30	31
	Mo	Tu	We	Th	Fr	Sa	Su	Mo	Tu	We	Th	Fr	Sa	Su	Mo	Tu	We	Th	Fr	Sa	Su	Mo	Tu	We	Th	Fr	Sa	Su	Mo	Tu	We
AUGUST	1	2	3	4	5	6	7	8	9	10	11	12	13	14	15	16	17	18	19	20	21	22	23	24	25	26	27	28	29	30	31

**GREECE → BARI**

	Mo	Tu	We	Th	Fr	Sa	Su	Mo	Tu	We	Th	Fr	Sa	Su	Mo	Tu	We	Th	Fr	Sa	Su	Mo	Tu	We	Th	Fr	Sa	Su	Mo	Tu	We
AUGUST	1	2	3	4	5	6	7	8	9	10	11	12	13	14	15	16	17	18	19	20	21	22	23	24	25	26	27	28	29	30	31
	Th	Fr	Sa	Su	Mo	Tu	We	Th	Fr	Sa	Su	Mo	Tu	We	Th	Fr	Sa	Su	Mo	Tu	We	Th	Fr	Sa	Su	Mo	Tu	We	Th	Fr	
SEPTEMBER	1	2	3	4	5	6	7	8	9	10	11	12	13	14	15	16	17	18	19	20	21	22	23	24	25	26	27	28	29	30	

- All other dates NOT mentioned in the above tables are low season dates.
- For the 01:30 departure from Corfu, the seasonality of the previous day applies (departure from Patras or Igoumenitsa).

**PATRAS ► IGOUMENITSA ► BARI**

01.01.22 - 31.05.22 & 01.10.22 - 31.12.22	Patras Departure	Igoumenitsa Departure	Bari Arrival*
Daily	17:30	23:59	09:00

- No sailings on: 01.01 & 25.12
- Via Corfu on Monday 25.04: Patras (Dep. 17:30) - Igoumenitsa (Dep. 23:59) - Corfu (Dep. 01:30 on 26.04) - Bari (Arr. 09:30 on 26.04)

**PATRAS ► IGOUMENITSA ► CORFU ► BARI**

01.06.22 - 30.06.22 & 19.09.22 - 30.09.22	Patras Departure	Igoumenitsa Departure	Corfu Departure*	Bari Arrival*
Daily except Wednesday	17:30	23:59		09:00
Wednesday	17:30	23:59	01:30	09:30

**PATRAS ► IGOUMENITSA ► CORFU ► BARI**

01.07.22 - 21.07.22	Patras Departure	Igoumenitsa Departure	Corfu Departure*	Bari Arrival*
Mon., Tue., Thu., Fri., Sun.	17:30	23:59		09:00
Wed. & Sat.	17:30	23:59	01:30	09:30

**PATRAS ► IGOUMENITSA ► CORFU ► BARI**

22.07.22 - 21.08.22	Patras Departure	Igoumenitsa Departure	Corfu Departure*	Bari Arrival*
Mon., Tue., Thu., Sun.	17:30	23:59		09:00
Wednesday	17:30	23:59	01:30	09:30
Friday	17:30	23:59	01:30	07:30 08:30
Saturday		23:59	01:30	08:30

**PATRAS ► IGOUMENITSA ► CORFU ► BARI**

22.08.22 - 18.09.22	Patras Departure	Igoumenitsa Departure	Corfu Departure*	Bari Arrival*
Mon., Tue., Thu., Fri.	17:30	23:59		09:00
Wed., Sat. <sup>[1]</sup> , Sun. <sup>[1]</sup>	17:30	23:59	01:30	09:30

- [1] No call at Corfu port on Saturday 10.09 and on Sunday 11.09: Patras (Dep. 17:30) - Igoumenitsa (Dep. 23:59) - Bari (Arr. 09:00, the following day)

\* The following day.

- Departures and arrivals are indicated in local times.
- Arrival times quoted, indicate the time the vessel arrives at the entrance of the port.
- The above itineraries may be modified due to ship maintenance.

**SEASONS**

Low season Shoulder season High season

Low season Shoulder season High season

Jointly operated with ANEK LINES

## FARES

Check out our offers on pages 20-23

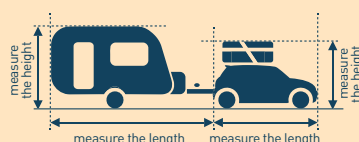
Fares in Euro (€) 10.01.2022 - 08.01.2023

CABIN / VEHICLE CATEGORY		LOW SEASON		SHOULDER SEASON		HIGH SEASON	
PASSENGERS (fares per person)		ONE WAY	RETURN	ONE WAY	RETURN	ONE WAY	RETURN
DECK	Deck	52	36	60	42	81	57
ATS	Aircraft-type seats	60	42	69	48	91	64
AB4	4-bed inside cabin	110	77	133	93	160	112
A4	4-bed outside cabin	121	85	151	106	184	129
AB3	3-bed inside cabin	128	90	161	113	194	136
AA3	3-bed outside cabin	143	100	181	127	224	157
AB2	2-bed inside cabin	146	102	185	130	227	159
A2	2-bed outside cabin	172	120	208	146	261	183
AA2	2-bed outside cabin	172	120	208	146	261	183
LUX	2-bed outside cabin <sup>[1]</sup>	214	150	259	181	318	223
VEHICLES (fares per vehicle)							
1.	Vehicles or trailers up to 6m long & 2m high	64	45	82	57	102	71
2.	Cars with roof box over 2m high	86	60	112	78	134	94
3.	Vehicles or trailers up to 6m long & over 2m high	107	75	148	104	183	128
4.	Vehicles or trailers 6.01m to 8m long	164	115	208	146	246	172
5.	Vehicles or trailers over 8.01m long	234	164	286	200	329	230
6.	Trailers up to 2.50m long & 2m high <sup>[2]</sup>	53	37	67	47	83	58
7.	Campers / Caravans / Trailers OPEN DECK up to 6m long	132	92	179	125	232	162
8.	Campers / Caravans / Trailers OPEN DECK 6.01m to 8m long	203	142	256	179	312	218
9.	Campers / Caravans / Trailers OPEN DECK over 8.01m long	290	203	353	247	419	293
10.	Motorcycles <sup>[3]</sup>	30	21	38	27	45	32
11.	Bicycles	Free	Free	Free	Free	Free	Free

[1] Including breakfast. [2] Same fare applies for Open Deck trailers up to 2.50m long. [3] Motorcycles with a side car or a trailer or 4 wheels are charged as vehicles up to 6m long & 2m high.

Certain accommodation types may not be available on vessels operating the route. All cabins are fitted with shower and WC.

<b>PURE<sup>®</sup> CABIN</b> (fares in €)	PER WAY
Cabin surcharge	50
<b>PET CARRIAGE</b> (fares per pet in €)	PER WAY
Pet in cabin	50
Pet in kennel	20
<b>MEASURE</b> YOUR VEHICLE'S DIMENSIONS	



### TERMS FOR FARES

- LUX, A2 and AB2 (with one lower and one upper bed): Single occupancy is only available in these cabin categories and has a 70% supplement.
- Occupancy of A4, AB4, A2 and AB2 cabins (with one lower and one upper bed) is available on a per bed basis.
- The round trip fare is calculated by adding the one way and the return fare of the respective season/seasons.
- Pet carriage in cabins:** Pet cabins are 4-bed inside & outside cabins that can be booked as 4-bed, 3-bed, 2-bed or single occupancy cabins. Single occupancy has a supplement of 70% on the respective double occupancy fare. Pet cabins are not available on a per bed basis. Maximum 2 pets per cabin allowed.
- PURE cabins:** These are LUX, A4 or AB4 cabins. Single occupancy of an inside or outside PURE cabin (AB4 or A4) has a supplement of 100% on the respective double occupancy fare. Single occupancy of a LUX PURE cabin has a supplement of 70% on the respective double occupancy fare. Not available on a per bed basis.
- A fuel surcharge of €16 per way, per passenger (excluding infants in any accommodation category) and €22 per way, per vehicle (excluding motorcycles) applies. The fuel surcharge may be adjusted when appropriate (not included in the above fares).



## VENICE ► IGOUMENITSA ► PATRAS

01.01.22 - 05.06.22 & 25.09.22 - 31.12.22	Venice Departure	Igoumenitsa Arrival*	Patras Arrival*
Wednesday & Sunday	12:00	14:30	21:00
Saturday	13:30	16:00	22:30

• No sailings on: 02.01 & 25.12

## PATRAS ► IGOUMENITSA ► VENICE

01.01.22 - 05.06.22 & 25.09.22 - 31.12.22	Patras Departure	Igoumenitsa Departure*	Venice Arrival**
Monday	23:00	06:30	07:00
Thursday & Friday	23:59	06:30	07:00

• No sailings on: 23.12 & 30.12

## VENICE ► CORFU ► IGOUMENITSA ► PATRAS

06.06.22 - 30.06.22 & 12.09.22 - 24.09.22	Venice Departure	Corfu Arrival*	Igoumenitsa Arrival*	Patras Arrival*
Wednesday	12:00		14:30	21:00
Saturday	13:30		16:00	22:30
Sunday	12:00	13:45	15:00	21:30

## PATRAS ► IGOUMENITSA ► CORFU ► VENICE

06.06.22 - 30.06.22 & 12.09.22 - 24.09.22	Patras Departure	Igoumenitsa Departure*	Corfu Departure*	Venice Arrival**
Monday	23:00	06:30		07:00
Thursday	23:59	06:30		07:00
Friday	23:59	06:30	07:45	07:30

## VENICE ► IGOUMENITSA ► PATRAS

01.07.22 - 11.09.22	Venice Departure	Igoumenitsa Arrival*	Patras Arrival*
Wednesday	12:00	14:30	21:00
Saturday	13:30	16:00	22:30

## PATRAS ► IGOUMENITSA ► VENICE

01.07.22 - 11.09.22	Patras Departure	Igoumenitsa Departure*	Venice Arrival**
Monday	23:00	06:30	07:00
Thursday	23:59	06:30	07:00

\* The following day.

\*\* 2 days after.

- Departures and arrivals are indicated in local times.
- Arrival times quoted, indicate the time the vessel arrives at the entrance of the port.
- The above itineraries may be modified due to ship maintenance.

# SEASONS

## VENICE → GREECE

VENICE → GREECE														Low season				Shoulder season				High season				No sailing					
	Fr	Sa	Su	Mo	Tu	We	Th	Fr	Sa	Su	Mo	Tu	We	Th	Fr	Sa	Su	Mo	Tu	We	Th	Fr	Sa	Su	Mo	Tu	We	Th	Fr	Sa	Su
JULY	1	2	3	4	5	6	7	8	9	10	11	12	13	14	15	16	17	18	19	20	21	22	23	24	25	26	27	28	29	30	31
	Mo	Tu	We	Th	Fr	Sa	Su	Mo	Tu	We	Th	Fr	Sa	Su	Mo	Tu	We	Th	Fr	Sa	Su	Mo	Tu	We	Th	Fr	Sa	Su	Mo	Tu	We
AUGUST	1	2	3	4	5	6	7	8	9	10	11	12	13	14	15	16	17	18	19	20	21	22	23	24	25	26	27	28	29	30	31

## GREECE → VENICE

GREECE → VENICE														Low season				Shoulder season				High season				No sailing						
	Mo	Tu	We	Th	Fr	Sa	Su	Mo	Tu	We	Th	Fr	Sa	Su	Mo	Tu	We	Th	Fr	Sa	Su	Mo	Tu	We	Th	Fr	Sa	Su	Mo	Tu	We	
AUGUST	1	2	3	4	5	6	7	8	9	10	11	12	13	14	15	16	17	18	19	20	21	22	23	24	25	26	27	28	29	30	31	
	Th	Fr	Sa	Su	Mo	Tu	We	Th	Fr	Sa	Su	Mo	Tu	We	Th	Fr	Sa	Su	Mo	Tu	We	Th	Fr	Sa	Su	Mo	Tu	We	Th	Fr	Sa	Su
SEPTEMBER	1	2	3	4	5	6	7	8	9	10	11	12	13	14	15	16	17	18	19	20	21	22	23	24	25	26	27	28	29	30		

- All other dates not mentioned in the above tables are low season dates.
- For the 06:30 departure from Igoumenitsa and the 07:45 departure from Corfu, the seasonality of the previous day applies (departure from Patras).

Jointly operated with ANEK LINES

## FARES

Check out our offers on pages 20-23

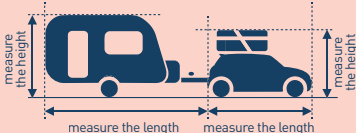
Fares in Euro (€) 10.01.2022 - 08.01.2023

CABIN / VEHICLE CATEGORY		LOW SEASON		SHOULDER SEASON		HIGH SEASON	
PASSENGERS (fares per person)		ONE WAY	RETURN	ONE WAY	RETURN	ONE WAY	RETURN
DECK	Deck	84	59	96	67	106	74
DOR	Dormitories with shared shower & WC <sup>[1]</sup>	128	90	153	107	182	127
ATS	Aircraft-type seats	97	68	110	77	120	84
AB4	4-bed inside cabin	154	108	178	125	211	148
A4	4-bed outside cabin	168	118	201	141	232	162
AB3	3-bed inside cabin	177	124	211	148	256	179
AA3	3-bed outside cabin	196	137	237	166	280	196
AB2	2-bed inside cabin	199	139	242	169	297	208
A2	2-bed outside cabin	221	155	266	186	324	227
AA2	2-bed outside cabin	221	155	266	186	324	227
LUX	2-bed outside cabin <sup>[2]</sup>	313	219	375	263	433	303
VEHICLES (fares per vehicle)							
1.	Vehicles or trailers up to 6m long & 2m high	111	78	137	96	170	119
2.	Cars with roof box over 2m high	154	108	192	134	241	169
3.	Vehicles or trailers up to 6m long & over 2m high	189	132	280	196	355	249
4.	Vehicles or trailers 6.01m to 8m long	305	214	425	298	518	363
5.	Vehicles or trailers over 8.01m long	427	299	578	405	689	482
6.	Trailers up to 2.50m long & 2m high <sup>[3]</sup>	93	65	119	83	141	99
7.	Campers / Caravans / Trailers OPEN DECK up to 6m long	224	157	335	235	429	300
8.	Campers / Caravans / Trailers OPEN DECK 6.01m to 8m long	364	255	517	362	633	443
9.	Campers / Caravans / Trailers OPEN DECK over 8.01m long	511	358	708	496	844	591
10.	Motorcycles <sup>[4]</sup>	54	38	62	43	69	48
11.	Bicycles	Free	Free	Free	Free	Free	Free

<sup>[1]</sup> Six-berth dormitories are located in a unified area, divided into male and female sections, each with communal showers and restrooms. Passengers who require bed linen may request it at the reception desk.

<sup>[2]</sup> Including breakfast. <sup>[3]</sup> Same fare applies for Open Deck trailers up to 2.50m long. <sup>[4]</sup> Motorcycles with a side car or a trailer or 4 wheels are charged as vehicles up to 6m long & 2m high.

• Certain accommodation types may not be available on vessels operating the route. All cabins are fitted with shower and WC • Camping on board is not available on ASTERION II.

PURE <sup>®</sup> CABIN (fares in €)		PER WAY	TERMS FOR FARES	
Cabin surcharge		50	<ul style="list-style-type: none"> <li>LUX, A2 and AB2 (with one lower and one upper bed): Single occupancy is only available in these cabin categories and has a 70% supplement.</li> <li>Occupancy of A4, AB4, A2 and AB2 cabins (with one lower and one upper bed) is available on a per bed basis.</li> <li>The round trip fare is calculated by adding the one way and the return fare of the respective season / seasons.</li> </ul>	
PET CARRIAGE (fares per pet in €)		PER WAY		
Pet in cabin		50		
Pet in kennel		20	<ul style="list-style-type: none"> <li><b>Pet carriage in cabins:</b> Pet cabins are 4-bed inside &amp; outside cabins that can be booked as 4-bed, 3-bed, 2-bed or single occupancy cabins. Single occupancy has a supplement of 70% on the respective double occupancy fare. Pet cabins are not available on a per bed basis. Maximum 2 pets per cabin allowed.</li> <li><b>PURE cabins:</b> These are LUX, A4 or AB4 cabins. Single occupancy of an inside or outside PURE cabin (AB4 or A4) has a supplement of 100% on the respective double occupancy fare. Single occupancy of a LUX PURE cabin has a supplement of 70% on the respective double occupancy fare. Not available on a per bed basis.</li> <li>A fuel surcharge of €31 per way, per passenger (excluding infants in any accommodation category) and €22 per way, per vehicle (excluding motorcycles) applies. The fuel surcharge may be adjusted when appropriate (not included in the above fares).</li> </ul>	
! MEASURE YOUR VEHICLE'S DIMENSIONS				
				



## ALL FOR YOUR CONVENIENCE



### 20% early booking

**Ancona:** Discount applies on all individual passenger fares, on fares for vehicles up to 6m long & 2m high, cars with roof box over 2m high, trailers up to 2.50m long & 2m high and on fares for motorcycles. The discount is not applicable to reservations with all other vehicle categories as well as to "Camping on Board" reservations.

**Bari & Venice:** Discount applies on all individual passenger and vehicle fares and to "Camping on Board" reservations.

Valid for new reservations and ticket issuance until 28th February 2022. Valid for one-way or round-trip travel until 31<sup>st</sup> December 2022. Reservations may be changed or cancelled without fees until 15th March 2022. If the travel dates or itineraries are changed or ticket is turned into open date after 15th March 2022, difference between early booking and brochure fares has to be paid - difference is calculated on the affected leg. Early Booking tickets are non-refundable after 15th March 2022. Tickets may be issued with an open return (outbound leg with early booking discount, inbound leg with brochure return fares-no further early booking discount). Discount is given on top of all other discounts mentioned in this brochure (apart from the child discount). Tickets must be issued within 21 days following booking date.

### 50% discount for children

Children between the ages of 4 and 16 years old pay 50% of the selected adult fare.

Children under the age of 4 who do not occupy a bed/air seat, pay only €5.50 per passage. Children under the age of 4 who occupy a bed/air seat, pay 50% of the selected adult fare. Children travelling in cabins must be accompanied by an adult.



- Discounts are not cumulative and only one of them (the greater) is granted at a time (unless otherwise stated in the reduction terms).
- Discounts do not apply to fuel surcharge, to fares for pet carriage and to PURE cabin surcharge.







## 20% discount for families & friends

20% discount for 3 or 4 passengers travelling together in the same AA3/AB3 or A4/AB4 cabin.

Discount also applies on all vehicle fares excluding trailers and motorcycles. All passengers and vehicles (if any) must travel with the same reservation code.

## 20% youth discount

All passengers between 17 and 25 years old are entitled to a 20% discount.

Discount also applies on fares for vehicles up to 6m long & 2m high, vehicles up to 6m long & over 2m high, cars with roof box over 2m high and motorcycles. Not valid for trailers. The discount is valid for "Camping on Board" reservations. Holders of the ISIC student card (International Student Identity Card) and the EYC card (European Youth Card) are also entitled to the 20% discount, regardless their age. Youth passengers under 18 years old travelling in cabins must be accompanied by an adult.



## 20% senior discount

All passengers 60 years old and over are entitled to a 20% discount.

Discount also applies on fares for vehicles up to 6m long & 2m high, vehicles up to 6m long & over 2m high, cars with roof box over 2m high and motorcycles. Not valid for trailers. The discount is valid for "Camping on Board" reservations.

- Discounts are not cumulative and only one of them (the greater) is granted at a time (unless otherwise stated in the reduction terms).
- Discounts do not apply to fuel surcharge, to fares for pet carriage and to PURE cabin surcharge.



## ALL FOR YOUR CONVENIENCE



### 20% discount on air seats & deck

20% discount for minimum 3 passengers (over 4 years old) travelling in air seat or deck. Discount also applies on fares for vehicles up to 6m long & 2m high (excluding trailers & motorcycles) and on fares for cars with roof box over 2m high. The discount is not applicable to reservations with all other vehicle categories nor to "Camping on Board" reservations. All passengers and vehicle (if any) must travel with the same reservation code and on common travel dates.

### 25% discount for automobile associations/ camping clubs

Members of ADAC, ACE, ÖAMTC, TCS, NKC, FFCC, ANWB, PLEINAIR, VLAAMSE KAMPERTOERISTEN VZW, TOURING CLUB ITALIANO and many more automobile associations and camping clubs receive a 25% discount on vehicle fares. The vehicle must be accompanied by the member of the automobile association or camping club. Discount does not apply to "Camping on Board" reservations on the Ancona route for the following period: Ancona – Greece: not valid from 1st July until 15th August, Greece – Ancona: not valid from 1st August until 15th September. The 25% discount is combinable with the senior, youth and children discounts granted to the passengers (i.e. the vehicle is granted the 25% discount and the youth passenger the 20% discount etc). Upon making a reservation and during check-in at port, the automobile or camping club membership card must be presented. Limited capacity available. For further information, please visit [www.superfast.com](http://www.superfast.com)



- Discounts are not cumulative and only one of them (the greater) is granted at a time (unless otherwise stated in the reduction terms).
- Discounts do not apply to fuel surcharge, to fares for pet carriage and to PURE cabin surcharge.





## 30% discount on domestic tickets

Valid for passenger and vehicle (all categories) fares. The discount is valid on one way and round trip Domestic Line ticket and is not cumulative with any other domestic line discounts. Valid in combination with a trip on the Adriatic Sea. The Adriatic Sea tickets and the Domestic Lines tickets (Cyclades, Dodecanese, North Aegean islands, Sporades, Saronic islands & Crete) must be issued simultaneously.

## 30% discount on return tickets

Valid only when outbound and return tickets are issued at the same time and in the same reservation code (passenger names and vehicle category must also be the same in both legs of the reservation). The discount is cumulative with all other discounts as it is already included in the price list.



## 20% seasmile offers

Seasmiles Silver & Gold members are entitled to a 20% discount. Discount also applies on all vehicle fares excluding trailers and open deck vehicles. Upon booking, the seasmiles membership card number must be included in the reservation in order to take advantage of the discount. During check-in at port, the membership card must be presented.

- Discounts are not cumulative and only one of them (the greater) is granted at a time (unless otherwise stated in the reduction terms).
- Discounts do not apply to fuel surcharge, to fares for pet carriage and to PURE cabin surcharge.





## ALL OF GREECE...

If your final destination is one of the beautiful Greek islands, Blue Star Ferries and Hellenic Seaways, take you to many Aegean destinations.



NEW AERO CATAMARAN



## Organize your trip in the most convenient way.

For detailed information on sailings, our latest offers or if you wish to book online, check:

**[www.bluestarferries.com](http://www.bluestarferries.com)** or **[www.hsw.gr](http://www.hsw.gr)**,

or contact your travel agency

or call at **+ 30 210 8919800**.

## 30% discount

for tickets to Cyclades, Dodecanese, N. Aegean islands, Sporades, Saronic Gulf islands and Crete, when combined with tickets to the Adriatic Sea (Italy-Greece).

## 3 new AERO CATAMARAN vessels

Aero Catamarans are vessels constructed with cutting-edge carbon fibre technology, sleek design, easy boarding – including for disabled persons – adequate space for stowing luggage, a protected space for accommodating pets, and room to transport and charge electric bicycles. Travelling at high speed, they will boast lower fuel consumption and reduced air pollutant emissions, contributing to the gradual transition to a greener and more competitive economy with fully upgraded services.





2022



\*The routes are jointly operated with ANEK LINES.



HELLENIC SEAWAYS

10%-40% discount  
for seasmiles  
members

For more information on seasmiles  
offers, you may visit:  
[www.bluestarferries.com](http://www.bluestarferries.com)  
& [www.hsw.gr](http://www.hsw.gr)



 SUPERFAST FERRIES®



## FLEET



### SUPERFAST XI

**Built Year:** 2002  
**Ship Yard:** Flender Werft, GER  
**Length (m):** 199,90  
**Width (m):** 25,0  
**Capacity (t):** 30.902  
**Speed (knots):** 29  
**Cabins:** 198  
**Passengers:** 1.821  
**Garage:** 1.915 lane meters



### SUPERFAST I

**Built Year:** 2008  
**Ship Yard:** Nuovi Cantieri Apuania, ITA  
**Length (m):** 199,14  
**Width (m):** 26,6  
**Capacity (t):** 25.757  
**Speed (knots):** 24,2  
**Cabins:** 102  
**Passengers:** 938  
**Garage:** 2.505 lane meters



### SUPERFAST II

**Built Year:** 2009  
**Ship Yard:** Nuovi Cantieri Apuania, ITA  
**Length (m):** 199,14  
**Width (m):** 26,6  
**Capacity (t):** 25.518  
**Speed (knots):** 24,2  
**Cabins:** 102  
**Passengers:** 938  
**Garage:** 2.505 lane meters



## ADRIATIC SEA TERMINAL STATIONS



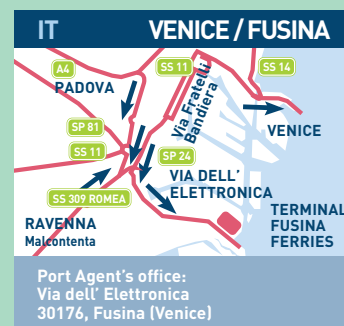
**Passenger Terminal:**  
 via Luigi Einaudi, Zona Mandracchio  
 I-60125, Ancona

Tel.: +39 071 20 72 434,  
 Fax: +39 071 20 89 234,  
 e-mail: info.anconaport@superfast.com



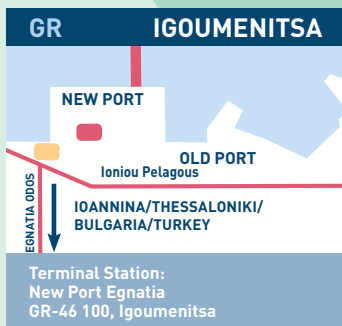
**Port Agent's office:**  
 4/6 C.so Antonio de Tullio - I - 70122,  
 Bari

Check-in office: Terminal Crociere [New  
 Terminal Cruise] Porto di Bari.  
 Entrance: Lungomare Starita - Varco  
 della Vittoria-Bari  
 Tel.: +39 080 52 82 828/09  
 Fax.: +39 080 52 82 444  
 e-mail: info.bariport@superfast.com



**Port Agent's office:**  
 Via dell' Elettronica  
 30176, Fusina (Venice)

Tel.: +39 041 5286522  
 Fax: +39 041 2419247  
 e-mail: info@anekitalia.com



**Terminal Station:**  
 New Port Egnatia  
 GR-46 100, Igoumenitsa

Tel.: +30 26650 28 150/24 252/29 270  
 e-mail: info.igoumenitsaport@superfast.com



**Port Agent's office:**  
 22, Ethnikis Antistaseos Str.  
 New Port, GR-491 00, Corfu

Tel.: +30 26610 81 222/26 660  
 Fax: +30 26610 26 426  
 e-mail: info.corfuport@superfast.com



**Port Agent's office:**  
 12, Othonos Amalias Str., GR-26223, Patras  
**Embarkation office:** New Terminal Station  
 South Patras Port, 26333, Patras

**Ancona route**  
 Tel.: +30 2610 622 500, Fax: +30 2610 623 574  
 e-mail: info.patraport@superfast.com  
**Bari route**  
 Tel.: +30 2610 634 000, Fax: +30 2610 634 090  
 e-mail: info.patrasport.bari@superfast.com

• All passengers are kindly required to proceed to the embarkation area at least 3 hours prior to the scheduled departure time.

Port Entrance Passenger Terminal Port Agent's Office

Jointly operated with ANEK LINES

# GENERAL TERMS AND CONDITIONS/INFORMATION 2022

Passengers, their luggage and accompanied vehicles are carried subject to the International Treaties and Conventions and the general conditions of carriage (collectively referred to as "General Terms and Conditions") as these conditions were determined by "ANEK - SUPERFAST JOINT VENTURE" (hereinafter referred to as "the Company"). These General Terms and Conditions include exclusions and limitations of carriers' liability for death, illness or for damage to or loss of vehicles and luggage or for delay or deviation. Copies of the General Terms and Conditions of carriage of the Company are available upon request.

## Timetables - Fares

Fares and timetables listed in the catalogue of the Company are based on conditions existing at the time of print. If any conditions should change after the time of print, the Company reserves the right to make changes to the timetable, the fares and the routes or to refrain from contractual obligations without prior notice. The Company however is not liable for any damages resulting thereof. The aforementioned conditions include any kind of unforeseeable circumstances like an increase in fuel prices or currency fluctuation. In the unlikely event that contractual obligations may not be fulfilled, the customer is entitled to a full refund of payments made. The Company cannot be held liable for any delays caused by third parties, port authorities, or extreme and unusual weather conditions. Schedules are subject to change without prior notice.

## Reservation Requirements

In compliance with international SOLAS regulations and EU Law, passengers are required to supply the following information during reservation: Name and Surname, Gender, Date of birth, Nationality, Contact phone number or email address, Type and Registration number of vehicle (if applicable), Type of Identification (ID card, passport or other), Identification Number (ID card, passport or other).

## Ticket Validity

Tickets are valid for one year from the date of issue (not print or reservation) except for tickets with special fare that have restricted validity. A ticket is not transferable unless otherwise provided by law. The person allowed to travel is the person named on the ticket (passage contract). Change of a passenger's name and surname on an issued ticket is not acceptable. The Company reserves the right to request passengers to present valid identification documents before travelling and will not be held liable if a passenger -other than the person entitled to travel under a ticket- who has presented identification documents to the Company corresponding to the passenger named on the ticket has travelled and/or has been reimbursed.

## Exchange Rate

The fares of tickets purchased in other countries or onboard may differ due to fluctuations in the exchange rate.

## Cancellations - Refunds

Cancellations can be made at the travel agency, port agency, Premium Sales Agent or at the offices of the Company where reservation and payment were made. Depending on the time of cancellation and in relation to the travel date, the following amounts are refunded:

- A 100% refund, up to 22 days prior to departure.
- A 80% refund, from 21 days up to 8 days prior to departure.
- A 50% refund, from 7 days to 24 hours prior to departure.
- The Company has no obligation to refund in case of cancellations made less than 24 hours prior to ship's departure or if the passenger does not report at check-in.
- In the event of a partial cancellation of a round trip of which one crossing has been completed, the passenger will be refunded as above (based on the time of cancellation) for the crossing that is not completed.
- In the event of a whole cancellation of a round trip,

the passenger will be refunded as above (based on the time of cancellation).

- Above refund policy is not valid to tickets issued with a special offer (e.g. Early Booking). In such cases, the cancellation terms of the offer are applicable. Tickets can be converted to OPEN date tickets or to another departure date up to four (4) hours prior to ship's departure. If these tickets are cancelled, the date the tickets have been converted to open date or to another departure date is considered as the date of cancellation and the refund is calculated in relation to the original travel date.

A request for refund must be made in writing. Cancellations and refunds can only be settled through the travel agency, Premium Sales Agent or offices of the Company, where tickets were issued. Refunds for expired tickets are not possible. Port Agencies may cancel a ticket once check-in has been finalized but cannot refund money. The Company is entitled to retain the total value of ticket if the passenger interrupts his voyage at an intermediate port, unless the interruption is due to illness, accident or force majeure.

## Open Tickets

An open return date ticket, originally issued as open, not converted to open, is valid for one year from the date of issue (not print or reservation) and is refunded, if cancelled, with a 100% refund, provided that the cancellation request is made before its expiration. A ticket converted to open date ticket is valid for one year from the date of issue (not print or reservation) of the initial ticket and, if cancelled, it is refunded according to the cancellation policy of the initial ticket. Passengers with an open return ticket must reserve their return journey well in advance through the travel agency, Premium Sales Agent, port agency or the offices of the Company, where reservation and payment were made. Open return fares are always calculated based on the low season fare. In the event that a passenger travels in shoulder or high season or during a period in which a new tariff is in force, then the difference between the current and the pre-paid fare has to be paid by the passenger. Reservation takes place according to availability. The Company cannot always secure the reservation of the passengers on their desired travel dates or accommodation type. Alternative travel dates or accommodation types may be offered.

## Lost Tickets

In case of a lost ticket, the passenger must immediately notify the issuing travel agent, Premium Sales Agent, port agent or the Company. The reprinted ticket can only be picked up by the travelling passenger with valid identification at the port of departure. Note: At check-in, all passengers must provide a valid identification card or passport.

## Discounts

Following passengers are entitled discounted fares: a) infants, b) children, c) senior citizens, d) students, e) youths f) members of specific automobile associations & camping clubs, g) Aneksmart or Seasmiles loyalty club members. Valid proof that passengers are entitled discounted fares should be presented upon reservation and during check-in. Discounts should be claimed upon reservation. After the voyage, no fare may be refunded.

## Group Requests

Group fares can be requested through the Company, travel agencies and Premium Sales Agents. A group consists of minimum 16 passengers. For the period from 15.07 until 15.09, a group consists of minimum 20 passengers.

## Unaccompanied Children

The Company does not accept reservations for children under 15-years of age who are not accompanied by adults. Reservations for young people between 15 to 18-years of age can be accepted upon specific written permission by the parent or legal guardian for the unaccompanied voyage. Appropriate forms are available at the offices of

the Company (Customer Service, tel.: +30 210 89 19 010, e-mail cs.adriatic@superfast.com for Superfast Ferries vessels and tel.: +30 210 41 97 470, e-mail customerservice@anek.gr for Anek Lines vessels).

## Disabled passengers

On board our vessels there are specially designed cabins with easy access and operation to accommodate disabled passengers. Due to a limited number of such cabins, it is necessary to reserve in advance. For further assistance, please call the Customer Service Direct Line.

## Pets

On board our vessels there is a number of kennels available, which are necessary to be booked in advance. Furthermore, there is a limited number of cabins available for pet carriage. It is also necessary to reserve these in advance. Unaccompanied pets are not acceptable.

Owners or guardians are required to have their pet's valid health documents with them while travelling (EU citizens are additionally required to have their EU Pet Passport) and follow all entry regulations. For all cats, dogs and ferrets a valid rabies immunization document is mandatory. For more information, please always check with your veterinary and your local travel agent. Pets are not allowed indoors (bars, restaurants and other public areas) or in vehicles (unless you have booked camping on board), while access to the vehicle deck is forbidden during crossings. While walking on the open decks, pets are required to wear a muzzle and be on a leash, accompanied by the pet owner or guardian. The pet owner or guardian is held fully responsible for the care, safety and hygiene of the pet and for adhering to all laws and regulations related to the above. Furthermore, pet owners are solely responsible for any possible harm or damage caused by their animals to any third party. Excluded from the above-mentioned restrictions are animals that guard and assist people with disabilities that may accompany their owners. Owners must hold the appropriate certificates for these animals. Note: Carriage of live animals (other than pets) is governed by the cargo terms and conditions of the Company. For more information, passengers should contact the Customer Service department of the Company.

## Camping on Board

Camping on board is permissible from April 1st to October 31st. The passengers travelling with a caravan or a camper should check in at least 3 hours prior to the scheduled departure time. Delayed arrival of a camper may hinder boarding on the open deck. Due to the limited space for camping on board, it is advisable to book well in advance. For safety reasons, cooking and the use of gas or fire by camping-on-board passengers is strictly forbidden. Please pay special attention to the camping on-board instructions available on board. Camping on board is permitted for clients traveling with vehicles officially registered as camping vehicles, campers and caravans. Regular cars and/or minibus vehicles are not permitted for camping on board. Any vehicles that are not registered as camping vehicles will not be permitted for camping on board and clients will be denied access to the open deck.

## Meals & Drinks

Meals and drinks are not included in the price of the ticket.

## Personal Belongings

Passengers may hand in their valuables for safekeeping at Purser's Office, if their total value does not exceed 500€. The Company is not responsible for the loss of money or valuables left in open storage spaces or in cabins. Please, report the loss of any personal item to the Reception Desk on board during the voyage or call the Customer Service Direct Line. Personal belongings that have been left in vehicles will not be accessible during the voyage since entry to the garage is prohibited after ship's departure.

## Boarding Procedure / Entry Regulations

Due to our compliance with the security regulations of the ISPS (International Ship and Port Facility Security) code, all passengers are kindly required to proceed to the embarkation area, at least 3 hours prior to the scheduled departure time. All passengers are required to present their boarding card, a valid passport or ID, their vehicle's license as well as any valid document that proves that they are entitled discounted tickets (if they have such tickets) during check-in and to the vessel's authorized personnel. The Company reserves the Company's rights to deny embarkation to any individual who, according to the best of Company's knowledge, does not appear to possess valid travel documents or fails to prove, beyond a doubt, his/her identity. In the event of a fine being imposed on the Company by the immigration office, the amount will be charged to the passenger who failed to provide the proper legal documents. The Company cannot be held responsible in the event that authorities prevent a passenger from continuing his/her journey. In the event of immigration officials refusing entry, the passenger will be sent back to his/her departure place at his/her own expense. We would recommend that citizens of all states contact the appropriate consulate for details. Infants and children also require official documents of identification. All persons and all items brought on board the Vessel are liable to be searched. Persons refusing to comply with this demand shall be denied access on board and will be reported to the appropriate port authorities. If a passenger boarded on the Vessel wishes to disembark prior to departure, he/she must take all their carrying luggage and/or vehicle. In the case of vehicles of all kind, please bear in mind the possibility of you being unable to remove them from the vessel's garage due to their pre-arranged parking positions. Carriage of guns, cartridges, explosive, flammable, combustible and in general hazardous materials is strictly prohibited.

## Currency on board

The currency used on board is Euro. ATM cash points are available on board Superfast Ferries vessels. Major credit cards are accepted.

## Telecommunications & Internet

The following communication options are available on board:

- The use of personal cellular (mobile) phones during the entire duration of the voyage. There are different rates for this satellite roaming service. For any information about the rates of this service, please contact your mobile network provider.
- Wireless Internet connection (Wi-Fi) during the entire trip.

## Customer Service Direct Line

For any Customer Service inquiries, comments or suggestions, for Superfast Ferries vessels please call, tel.: +30 210 8919010 or send us an e-mail: cs.adriatic@superfast.com and for Anek Lines vessels please call, tel.: +30 210 4197470 or send us an e-mail: customerservice@anek.gr.

## Useful Information

Each cabin is characterized and offered as 2-bed, 3-bed or 4-bed, depending on the number of passengers that use it, and not the number of beds existing in the cabin, or the (extra) facilities it may provide. Passengers may freely use all public areas of the vessels (bars, restaurants, lounges, etc.). Sleeping in the lounges or corridors is prohibited. Passengers should comply with the crew's instructions regarding the adherence to safety rules and the vessel's good operation.

## Modification of Terms

The Company reserves the right to modify or even unilaterally renew the above General Terms at any time, even after the completion of the booking process and is under no obligation to inform the passenger in advance. Indicatively, the Company may modify the terms of cancellations - refunds - open tickets due to changes in the existing national or European legal framework, as amended specifically due to the COVID-19 pandemic and the consequent travel restrictions.





**AUSTRIA**  
**VOIGT SEEREISEN-AGENTUR GmbH,**  
 Herrenholz 10-12, D-23556 Luebeck,  
 tel.: +49 451 88 00 61 66,  
 fax: +49 451 88 00 61 29,  
 e-mail: voigtseereisen@superfast.com

**BELGIUM**  
**ARMANDO FARINA FERRIES,**  
 Cederlaan 14, B-2630 Aartselaar,  
 tel.: +32 3 231 56 50,  
 e-mail: armando.farina@superfast.com

**BULGARIA**  
**ANESI EMDI LTD,**  
 1142 Sofia, 68, Vasil Levski blvd. entr.1,  
 floor 1, ap.1,  
 tel.: +359 879 832 815, +359 2 9868820  
 fax: +359 2 9818778,  
 e-mail: anesi@superfast.com

**CZECH REPUBLIC**  
**WECO-TRAVEL (CZ) s.r.o.,**  
 Na Zertvach 34, CZ-180 00 Prague 8,  
 tel.: +420 234 094 155,  
 fax: +420 234 094 156,  
 e-mail: wecotravel@superfast.com

**CYPRUS**  
**KATERINA TRAVEL & TOURS LTD.,**  
 23, Makarios Str., 4620 Episkopi, Limassol,  
 tel.: +357 70 00 55 70, +357 25 93 27 48,  
 fax: +357 25 93 31 13,  
 e-mail: katerina.travel@cytanet.com.cy

**FRANCE**  
**VIA FERRIES ET HOTELS**  
 494 rue Léon Blum,  
 34000 Montpellier,  
 tel.: +33 (0) 4 65 84 09 02 / 4 65 84 41 45  
 e-mail: contact@viaferriesethotels.com

**GERMANY**  
**IONIAN GmbH,**  
 Wienerstr 114, 70469 Stuttgart  
 tel.: +49 711 8147 6207, +49 711 8179 746  
 fax: +49 711 8569 269  
 e-mail: ionian@superfast.com  
**VOIGT SEEREISEN-AGENTUR GmbH,**  
 Herrenholz 10-12, D-23556 Luebeck,  
 tel.: +49 451 88 00 61 66,  
 fax: +49 451 88 00 61 29,  
 e-mail: voigtseereisen@superfast.com

**GREECE**  
**PATRAS:**  
**TH. FILOPOULOS - K. PARTENOPOULOS SA,**  
 Embarkation office: New Terminal Station,  
 South Patras Port, GR-26333 Patras,  
 12, Othonos Amalias Str., GR-26223 Patras,  
 tel.: +30 2610 622 500, fax: +30 2610 623 574,  
 e-mail: info.patraport@superfast.com,  
**G. TELONIS - FERRY CENTER,**  
 Embarkation office: New Terminal Station,  
 South Patras Port, GR-26333 Patras  
 12, Othonos Amalias Str., GR-26223 Patras,  
 tel.: +30 2610 634 000,  
 fax: +30 2610 634 090,  
 e-mail: info.patrasport.bari@superfast.com  
**EUROLINE - STAVROS BAKOLIAS & CO L.T.D.,**  
 Embarkation office: New Terminal Station,  
 South Patras Port, GR-26333 Patras,  
 tel.: +30 2610 343655, +30 2610 342601,  
 fax: +30 2610 365533,  
 email: ticket@anekpat.gr

**IGOUMENITSA:**  
**PITOULIS S.A.,**  
 Embarkation office: Terminal Station T1,  
 Cargo embarkation office: Terminal Station T2,  
 New Port Egnatia, GR-46100 Igoumenitsa,  
 tel.: +30 26650 28150 / 24252 / 29270 / 29200,  
 e-mail: info.igoumenitsaport@superfast.com  
**EUROLINE - STAVROS BAKOLIAS & CO L.T.D.,**  
 Embarkation ticket office: New Terminal  
 Station T1, Cargo embarkation office:  
 New Terminal Station T2  
 Central office: Ioniou Pelagous Str. (New Port),  
 GR-46100 Igoumenitsa  
 tel.: +30 26650 26081 / 29063,  
 fax: +30 26650 28705,  
 e-mail: ticket@anekigo.gr

**CORFU:**  
**ATHANASIOU SHIPPING & TOURISM LTD,**  
 22, Eth. Antistaseos Str., New Port,  
 GR-49100 Corfu,  
 tel.: +30 26610 81 222/26 660,  
 fax: +30 26610 26 426,  
 e-mail: info.corfuport@superfast.com  
**MANCAN TRAVEL,**  
 1, Eth. Antistaseos Str.,  
 GR-49132 Corfu,  
 tel.: +30 26610 32664,  
 +30 26610 24503-504  
 fax: +30 26610 36935,  
 e-mail: mancan@otenet.gr

**HOLLAND**  
**ALEXCO COMPANY/POLYPLAN REIZEN,**  
 Aalsmeerderdijk 66, 1438 AT Oude Meer /  
 Schiphol-Rijk, Call Centre Reservations:  
 tel.: +31 (0) 20 657 56 57,  
 e-mail: polyplan@superfast.com  
**OVERTOCHT.NL,**  
 Harderwijkweg 141, 3852 AB Ermelo,  
 tel.: +31 332475151, e-mail: info@overtocht.nl

**ISRAEL**  
**A. ROSENFELD SHIPPING Ltd.,**  
 104, Hatzmuth Road, 2nd Floor,  
 PO Box 74, Haifa 310001,  
 tel.: +972 4 8613 613, fax: +972 4 8537 002,  
 e-mail: reservations@rosenfeld.net

**ITALY**  
**F. LLI MORANDI & C. SRL,**  
 Via XXIX Settembre 4/E, I-60122 Ancona,  
 Information & Booking Center: +39 071 20 20 33,  
 Infoline: +39 071 20 20 34, fax: +39 071 20 89 234,  
 e-mail: morandi@superfast.com  
**ANEK LINES ITALIA s.r.l.,**  
 Piazza della Repubblica 1, I-60121 Ancona,  
 Information and Booking Center:  
 tel.: +39 071 20 72 346, fax: +39 071 20 77 904,  
 e-mail: info@anekitalia.com

**POLAND**  
**PETPOLONIA,**  
 Stryszawa 178C, 34-205 Stryszawa,  
 tel.: +48 33 87 47 720 / 33 87 47 013,  
 e-mail: info@promy.pl

**PRISTINE / KOSOVO 1244**  
**EUROBERISHA TRAVEL,**  
 Kodra e Diellit-Qendra Tregtare nr 1,  
 Lok 1C, Pristine / Kosovo 1244,  
 tel.: +381 38 552 744, fax: +381 38 552 745,  
 e-mail: berisha@superfast.com

**SWITZERLAND**  
**CRUISE & FERRY CENTER AG,**  
 Caspar Wolf-Weg 5, CH-5630 Muri,  
 tel.: +41 56 675 75 90  
 e-mail: ferrycenter@superfast.com

**TURKEY**  
**YAKIN DOĞU DENİZ ACENTELİĞİ A.Ş.,**  
 Cumhuriyet cad Elmadag han 32  
 34367 Harbiye, Istanbul,  
 tel.: +90 212 251 55 08, fax: +90 212 251 48 77,  
 e-mail: yakindogu@superfast.com

**UNITED KINGDOM**  
**AFERRY LTD,**  
 2 Morrow Court, Appleford Road,  
 Sutton Courtenay, Oxon OX14 4FH,  
 tel.: +44 8445 765503,  
 e-mail: aferry@superfast.com  
**DIRECT FERRIES Ltd,**  
 2-3 Business Centre, Relixstowe Road,  
 IP10 0BF IPSWICH,  
 tel.: +44 1473 370 910  
 e-mail: directferries@superfast.com  
**VIAMARE LTD,**  
 Suite 108, Devonshire House, 582 Honeypot  
 Lane, Stanmore, Middlesex, HA7 1JS,  
 tel.: +44 (0)20 8206 3420, fax: +44 (0)20 8952 8082,  
 e-mail: ferries@viamare.com

**USA**  
**AMPHITRION HOLIDAYS,**  
 1010 Rockville Pike, Suite 401,  
 Rockville MD 20852,  
 tel.: +1 301 545 0999, fax: +1 301 294 5324,  
 e-mail: amphitron-us@superfast.com



**CALL CENTER:** tel.: +30 210 8919700,  
 e-mail: helpdesk1@anek-superfast.com

**PIRAEUS: PIRAEUS SALES OFFICE,**  
 24, Akti Kondili Str., GR-18545 Piraeus,  
 tel.: +30 210 4197510-12,  
 fax: +30 210 4122180  
 e-mail: pr-pir@anek.gr

**HERAKLION: HERAKLION SALES OFFICE,**  
 11, Dimokratias av., GR-71306 Heraklion, Crete,  
 tel.: +30 2810 347180, 308000,  
 fax: +30 2810 308009  
 e-mail: info.heraklion@attica-group.com

**CHANIA: CHANIA SALES OFFICE,**  
 Sof. Venizelos square, GR-73134 Chania, Crete  
 tel.: +30 28210 27500-4, fax: +30 28210 27505  
 e-mail: pr-cha@anek.gr

**SOUDA: SOUDA SALES OFFICE,**  
 Souda Square GR-73100 Souda, Crete  
 tel.: +30 28210 27500, fax: +30 28210 800051,  
 email: pr-cha@anek.gr

**superfast.com**



For further information and reservations,  
 please contact:



1-7, Lysikratous & Evripidou Street, GR-17674, Kallithea, Athens, Greece,  
 e-mail: superfast@superfast.com

